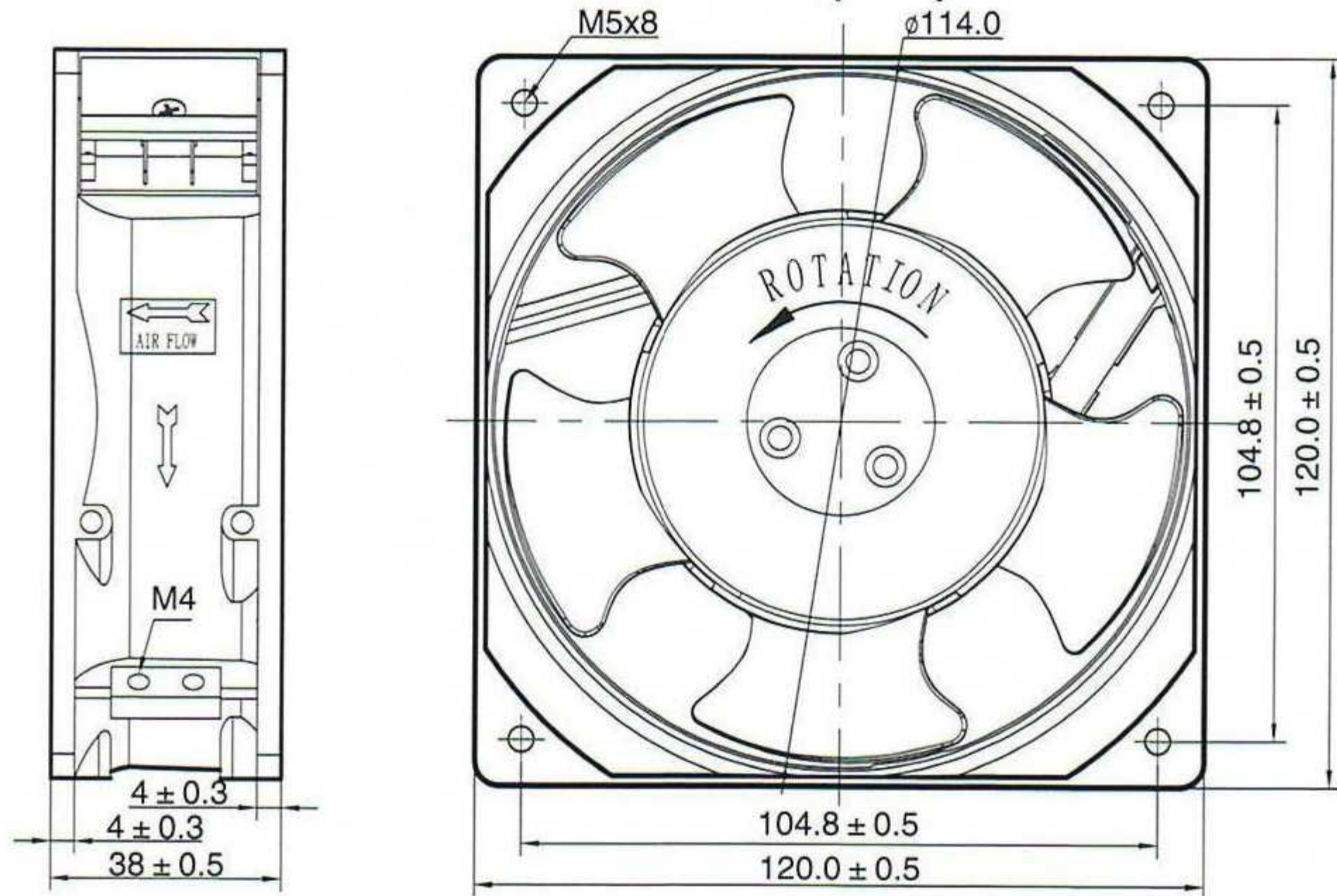
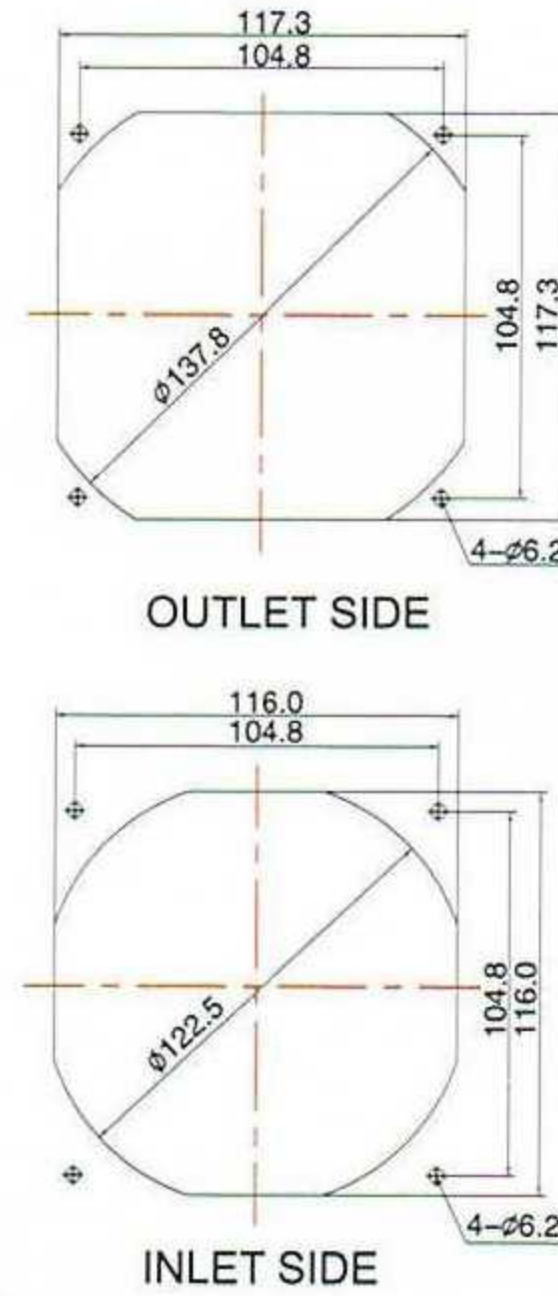


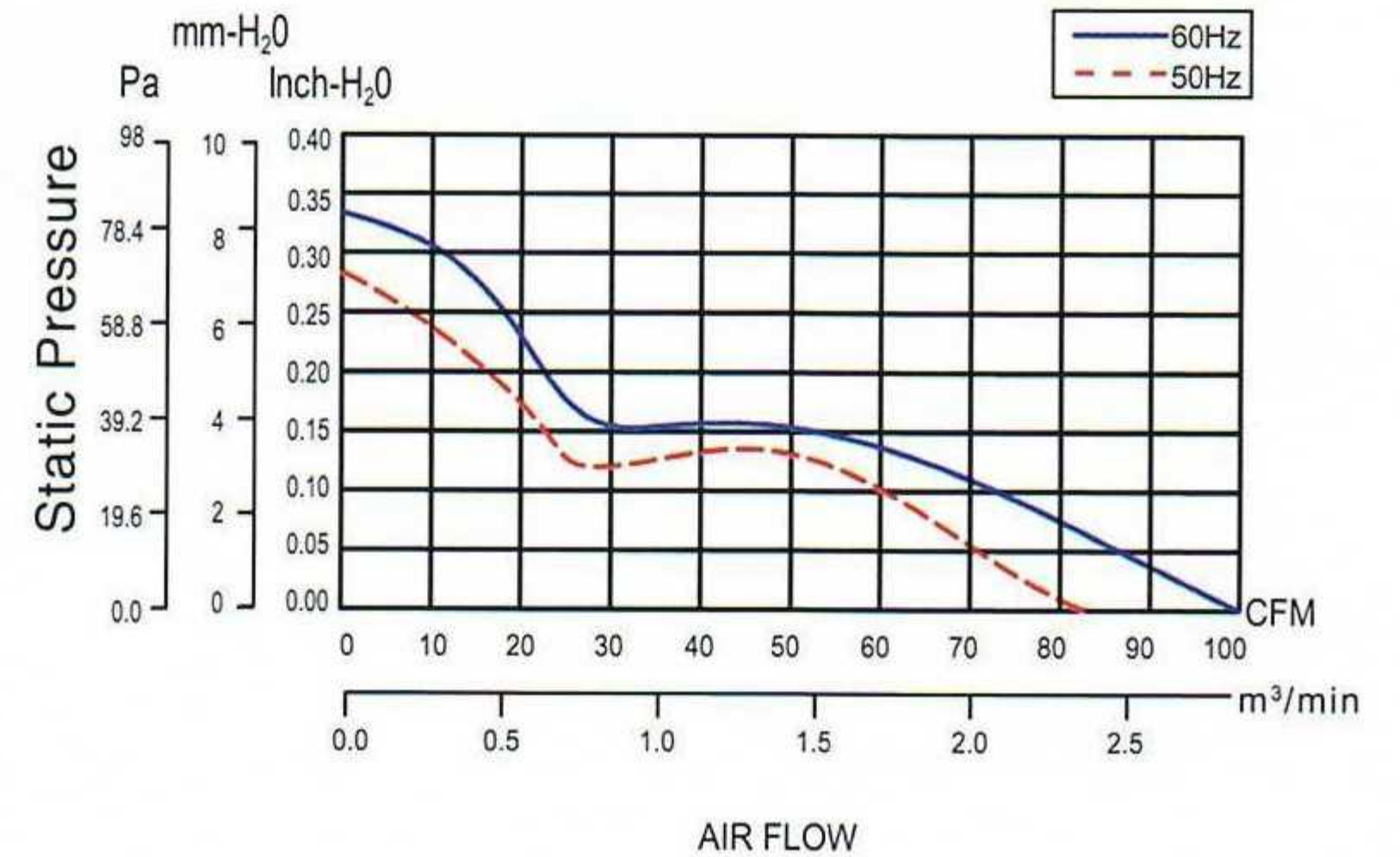
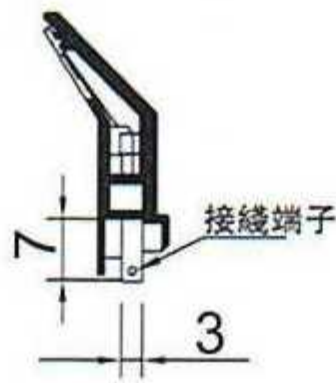
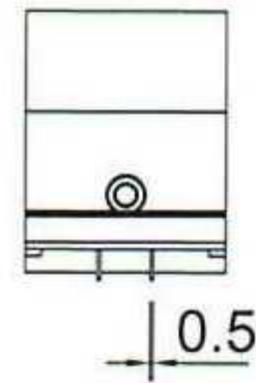
120×120×38mm(H)



柜体安装尺寸



UNITS=mm



Model (型号)	Part No. Terminal Leadwire	Bearing System (培林)	Rated Voltage(v) (电压)	Freq (Hz) (频率)	Current (A) (电流)	Input Power(w) (功率)	Speed (rpm) (转速)	Air Flow (CFM) (风量)	Static Pressure (inch-H ₂ O) (静压)	Noise Leve(dB-A) (噪音值)	Weight (g) (重量)
KA1238HA1(IP55)	1238HA1BMT(L)	Ball	110/120	50/60	0.28/0.22	21/18	2700/3100	84/100	0.28/0.34	45/51	470
KA1238HA2(IP55)	1238HA2BMT(L)	Ball	220/240	50/60	0.13/0.11	21/18	2700/3100	84/100	0.28/0.34	45/51	470
KA1238HA3(IP55)	1238HA3BMT(L)	Ball	380/400	50/60	0.07/0.06	21/18	2700/3100	84/100	0.28/0.34	45/51	470
KA1238HA1(IP55)	1238HA1SMT(L)	Sleeve(Best)	110/120	50/60	0.28/0.22	21/18	2700/3100	84/100	0.28/0.34	45/51	470
KA1238HA2(IP55)	1238HA2SMT(L)	Sleeve(Best)	220/240	50/60	0.13/0.11	21/18	2700/3100	84/100	0.28/0.34	45/51	470
KA1238HA3(IP55)	1238HA3SMT(L)	Sleeve(Best)	380/400	50/60	0.07/0.06	21/18	2700/3100	84/100	0.28/0.34	45/51	470

最新數據訊息，請予網上查詢！ Please check our website in case any update data.