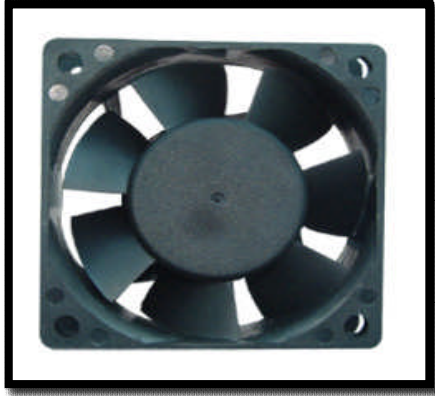


SD 6025



【Product name】 DC Brushless Motor 625

【Model】 SD 6025

【Size】 60 x 60 x 25 mm

【Frame】 Plastic Material UL94V-0

【Impeller】 Plastic Material UL94V-0

【Speed Range】 ±10%

【Operating Temperature】

Ball Bearing -20°C to + 70°C

Sleeve Bearing -10°C to + 65°C

Specifications

Model	Bearing	Rated Voltage (V)	Operating Voltage (V)	Air Flow (CFM)	Static Pressure (mH2O)	Speed (R.P.M)	Rated Current (Amp)	Input Power (Watt)	Noise (dBA)	Weight (g)
SD-6025	Two Ball Ball + Sleeve Sleeve	12	10.2~13.8	29.69	10.73	6000	0.41	4.92	42.5	65.0
SD-6025				26.96	9.06	5500	0.35	4.20	39.2	
SD-6025				24.27	7.42	5000	0.29	3.48	35.7	
SD-6025				21.44	6.03	4500	0.23	2.76	34.1	
SD-6025				19.00	4.69	4000	0.20	2.40	31.6	
SD-6025				16.76	3.68	3500	0.17	2.04	27.3	
SD-6025				14.24	2.74	3000	0.13	1.56	21.8	
SD-6025				11.72	1.93	2500	0.08	0.96	20.2	
SD-6025	Two Ball Ball + Sleeve Sleeve	24	20.4~27.6	29.69	10.73	6000	0.25	6.00	42.5	
SD-6025				26.96	9.06	5500	0.22	5.28	39.2	
SD-6025				24.27	7.42	5000	0.19	4.56	35.7	
SD-6025				21.44	6.03	4500	0.17	4.08	34.1	
SD-6025				19.00	4.69	4000	0.13	3.12	31.6	
SD-6025				16.76	3.68	3500	0.11	2.64	27.3	
SD-6025				14.24	2.74	3000	0.09	2.16	21.8	
SD-6025				11.72	1.93	2500	0.07	1.68	20.2	

Specification subject to change without notice

